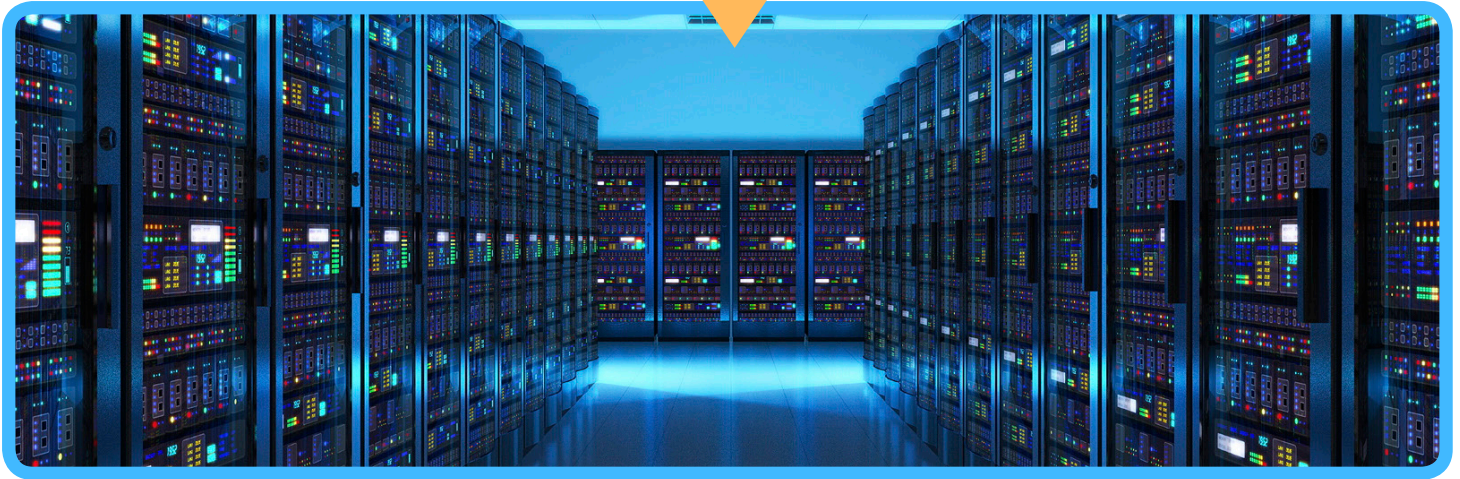


# VIDEO SURVEILLANCE STORAGE



## ARXYS | SHIELD-CORE

### Storage | Orchestrated



At the heart of successful security and surveillance solutions is high performance, scalable data access and protection. Arxys | Shield-Core delivers the intense multi-streaming throughput & data resilience required by advanced Video Management Systems at the lowest Total Cost of Ownership of any solution in the industry.

Arxys | Shield-Core delivers solid high availability protection with high performance access to video surveillance data. Software Orchestrated Storage 128 bit ZFS technology delivers breakthrough performance & pay as you grow scalability to power video surveillance solutions. Leveraging the core performance and scalability features of Arxys | Sentio SDS to solve surveillance needs

Arxys | Shield-Core is the protected security and surveillance platform of choice when security matters.



Genetec



### Advantages

- Highest multi-streaming bandwidth available
- Compatible with all leading Video Management Servers
- Lowest Total Cost Of Ownership storage server
- Scale-up technology delivers future-proof security

### Storage | Optimized



Arxys | Shield-Core high-density storage servers are designed for mid to large enterprise security installations. Advanced caching, high-performance enterprise grade drives and 128 bit ZFS technology deliver leading edge performance with efficiency.

The combination of high throughput & advanced data protection makes the Shield Core optimized for video streaming and archiving.

- Optimized for Private Clouds
- Guaranteed data protection
- Hardware independence
- Flexible scalability

With advanced hardware failover mechanisms, video surveillance systems built on Shield Core ensure sensitive video data is accessible. Shield-Core is optimized for high performance and scalability for high bandwidth applications where maximum uptime is not critical. All of the Core features without the advanced protection and disaster recovery features.



## Storage | Secured



IP surveillance requires a reliable, high performance storage infrastructure. Video Surveillance data requires secure, and guaranteed access for evidence and proof. Private Clouds that involve on-site data content for additional security are the leading choice. Arxys | Shield-Core delivers the 24x7 high availability and streaming performance required by law enforcement, public sector security deployments where security is paramount. Security & surveillance solutions that demand performance and scalability rely on Arxys | Shield-Core.

### Hardware Resilience:

- Hot-swap, redundant Platinum power
- Multiple iSCSI or NAS connections
- Redundant, hot-swap SAS storage controllers (expanders)



**High Accessibility**  
Network connectivity via iSCSI or SMB over Ethernet & SAS.

**Data Protection**  
RAID 6 & 60 delivers double parity protection, ZFS & ECC technology ensures data integrity

**Data Virtualization**  
Thin & Over Provisioning w/ pooled storage, & scale as you grow storage capacity

**Scalability**  
Up to about 5PB in single namespace with the ZFS technology on Linux OS



## Storage | Defined



The Arxys | Shield-Core running Sentio Software Defined Storage (SDS) platform, is purpose-built to scale-up to make storage management disruptively simple while reducing storage costs and complexity. Sentio has verified support for all major SAN/NAS protocols including iSCSI/FC and NFS/CIFS/SMB and a high availability scale-up 128bit ZFS file system with fault-tolerant technologies. Arxys | Sentio delivers a full array of enterprise features and capabilities for file, block and object storage at the lowest TCO in the industry.

Powered by:   
**JovianDSS**

### Software Orchestrated Storage:

- RAID6 or 60 delivers double parity
- Scale to fit: Scale-up to 5PB
- 128bit optimized Storage OS
- Tiered cache delivers performance
- Scale-up storage pools as you grow



Storage Controller	Single Controller	Chassis 1U Appliance	RoHS Compliant, UL/cUL/CB/CE/BSMI/CCC
CPU's / Cache Memory	Intel® Xeon® processor E5-2600 v4+ 4 Cores / Up to 64GB ECC, 288pin DDR4 SDRAM	Dimensions	17.2" (437mm) x 1.7" (43mm) x 16.9" (429mm) (W x H x D)
System Drives	Mirrored Storage OS controller drives	Gross Weight	Gross Weight: 27 lbs (12.25 kg), Net Weight: 15.5 lbs (7.03 kg)
SAS Expansion	128 SAS drives per controller - Broadcom 3008 SAS3 (12Gbps) via SAS3 Expander	Power Specifications	Hot-swap redundant 400W digital power supplies, 100 - 240Vac / 6.0 - 3.0A / 50-60Hz Platinum Level Certified
Networking	Dual 1Gbit Ethernet, Virtual Machine Device Queues Reduce I/O, IPMI v2.0 support	Operating Environment	10°C to 35°C (50°F to 95°F) 8% to 90% (non-condensing)
Host Connectivity	Single or Dual 10Gbit Ethernet - iSCSI or NAS (SMB)	Warranty	5-year limited warranty

Storage Capacity	Arxys   Shield 4U Expander Chassis	Chassis 4U expander	60 hot-swap 3.5" drive bays in 4U
Expander Chassis	Up to one (1) 4U expander chassis	Dimensions: (W, H, D)	174.8mm x 424mm x 1110mm / 6.88in. x 16.69in. x 43.7in. (with cable management arms)
RAW TB (per 4u expander)	720TB per 4U expander (Using 12TB enterprise drives)	Gross Weight	89.81 kg (198 lbs.) - fully configured with 60 helium drive modules
Appliance Connectors	8 x 12Gbps Mini-SAS (4 per I/O Module), Fully compliant with 12Gb/s SAS 3 interconnect	Power Specifications	Two 1,650W hot swap redundant, 200-240VAC auto-ranging, 47Hz-63Hz input (high line power only), N+1 redundant fans, 1.0 Kv/a typ, 1.8 max
Hybrid SSD Tiered Caching	Supports up to 12 high-performance SSD's (for tiered performance and caching)	Serviceability	Cable Management Arm (CMA) eliminates tangled cables during servicing of hot-swappable CRUs
Hot-Swap Everything	Redundant power supplies, N+1 fans, Drive Modules, I/O controllers	Warranty	5-year limited warranty



# ARXYS | SHIELD-CORE